

COAGULANT CHARGE ANALYZER CCA3100

STANDARD FEATURES

- Adjustable height stand accommodates samples from 250 mL to 2000 mL
- Rugged design for both lab and portable operation
- Easy to remove probe and piston
- Low/High conductivity gain adjustment
- Includes magnetic sample stirrer

OPTIONAL FEATURES

- Adapter cups for using 10 mL to 40 mL sample size
- Rollaway case for transporting unit

BENEFITS

- Provides laboratory streaming current charge measurement capability
- Quickly determines optimum dosage of coagulants and polymers
- Confirms proper operation of online SCM
- Large sample size and external mixing ensures accurate results

APPLICATIONS

Water Treatment

- Determine optimum coagulant dosage much faster than jar testing (use same jars and dosing procedures as current jar testing method)

Wastewater Treatment

- Determine optimum polymer dosage
- Facilitate polymer trial evaluations

Pulp & Paper

- Quantify level of anionic trash and charge demand
- Optimize feedrates of key additives

Coagulant/Polymer QA Testing

- Verify charge neutralization capability of different product batches
- Identify off-spec product prior to receipt or distribution

DESCRIPTION

Using a simple titration, the CCA3100 Coagulant Charge Analyzer enables operators to determine the optimum coagulant dosage much faster than conventional jar testing (five minutes or less). The CCA3100 can also be used to determine the “charge demand” of a sample, helping to identify charge-related process excursions in applications like papermaking. The measurement cell consists of a reciprocating piston in a probe assembly. The movement of liquid between two stainless steel electrodes creates a voltage signal indicating net charge of the sample. This signal is displayed in a range of -10.00 to + 10.00. The CCA is simple to use and provides repeatable results.



GENERAL SPECIFICATIONS

Display:	-10.00 to +10.00
Probe Type:	Immersion, quick replacement cartridge
Piston Type:	Quick replacement
Signal Gain:	Low/High Gain switch
Materials Contacting Sample:	Delrin, stainless steel
Sample Volume:	250 mL - 2000 mL 10 mL - 40 mL (optional)
Self Diagnostics:	Flashing LED, motor, optoswitch
Power Requirements:	110 VAC 60 hz, 1A 220 VAC 50 hz, 1A (optional)
Operating Temperature:	34° - 120° F (0° - 49° C)
Dimensions:	8.5" W x 17.8" H x 9.2" D (216 mm W x 425 mm H x 234 mm D) Unit fully extended 8.5" W x 26" H x 9.2" D (216 mm W x 660 mm H x 234 mm D)
Weight:	18 lbs (8.2 kg)

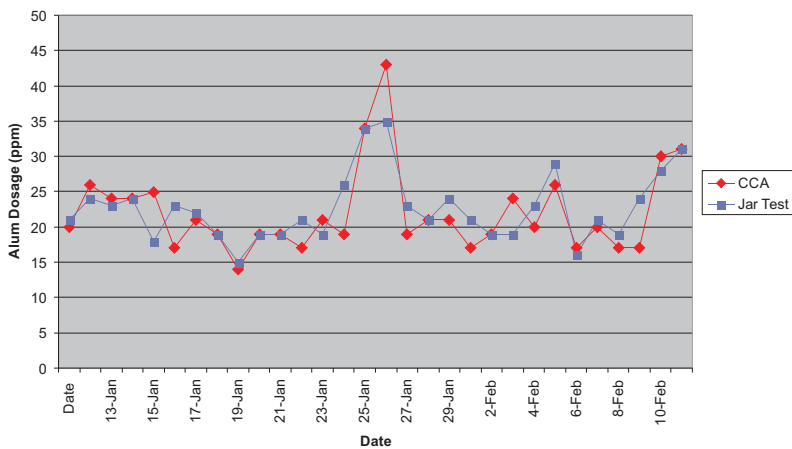
Adjustable Stand
accommodates multiple
sample volumes



Probe Cartridge with
Sample Adapter Cups



Actual 30 Day Coagulant Dose Comparison
at a Municipal Water Plant



Each jar test data point took around 30 minutes &
each CCA data point took less than 5 minutes.