

Lab Charge Analyzer

LCA5



The LCA5 is an essential coagulation optimization tool for the water treatment professional, allowing the user to quickly, and confidently, respond to rapidly changing raw water conditions. In under 5 minutes, the coagulant dosage needed to achieve charge neutralization can be determined by either manually or automatically titrating a raw water sample with coagulant until a zero (0) charge reading is obtained.

The LCA5 comes backed with nearly four decades of charge analysis expertise and world class customer support.

Standard Features

- Accommodates 1,000 to 2,000 ml sample volumes
- Integrated sample stirrer
- High-resolution 7" capacitive touchscreen display
- Graphical trending and data logging
- Export results to a USB flash drive
- Advanced signal health diagnostics
- Tutorial videos play directly on display

Optional Features

- pH & temperature measurement
- Automatic titration with coagulants and buffers (1 or 2 pumps)
- Syringe pump for neat coagulant titration
- Protective transport case

Benefits

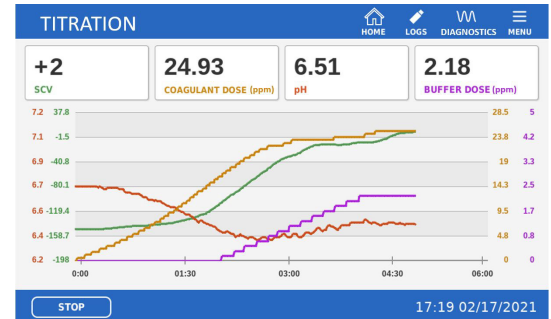
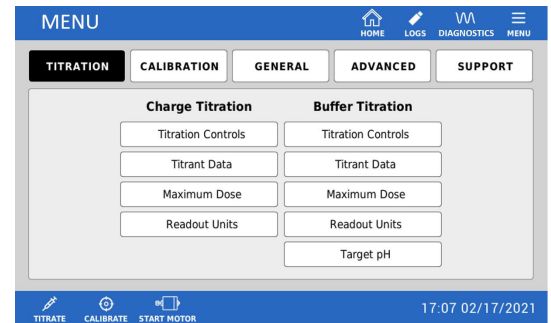
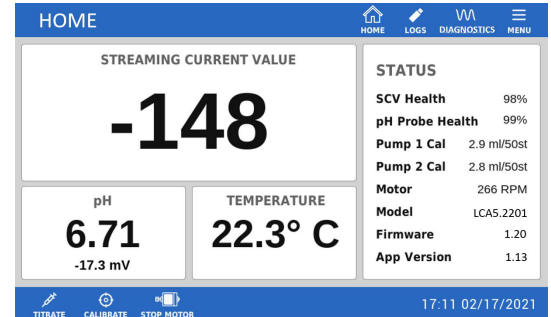
- Quickly determine target coagulant dosage needed to achieve charge neutralization, allowing for optimum NTU and TOC removal
- Assess minimum dosage of buffer needed to raise pH in low alkalinity waters to help achieve optimum coagulation
- Large sample size, sample stirrer, and advanced signal health diagnostics ensures accurate results



General Specifications

Display:	7" capacitive touchscreen, WVGA 800 x 480
Sensor:	Streaming Current, immersion, quick-connect
Sensor Wetted Materials:	Delrin, 316 stainless steel
Sample Volume:	1000 - 2000 mL
Sample Stirrer:	550 RPM direct-drive stirrer with safety clutch
Auto Titration Pumps*:	Solenoid micro-pump with 50 μ L dispense volume (used with dilute chemicals); Syringe pump with 0.5 μ L dispense volume (used with neat chemicals)
pH Probe*:	Glass body, 0 - 14 pH range, internal reference, ceramic junction
Temperature Probe*:	RTD, 316 SS Body
Power Requirements:	100 - 240 V, 50 - 60 Hz, 1 amp max
Operating Temperature:	32° - 120° F (0° - 49° C)
Dimensions:	8.5" W x 9.5" D x 15" H (23" H fully extended) 216 mm W x 241 mm D x 381 mm H (584 mm H fully extended)
Weight:	16 lbs (7.3 kg) 19 lbs (8.6 kg) with syringe pump

* Optional items must be specified at time of ordering.



MODEL CONFIGURATOR

LCA5.2	Automatic Pump Titration Configuration	Syringe Pump Upgrade⁽¹⁾	pH with Temp⁽²⁾
	0 = No Automatic Titration 1 = One Titrant Pump (Coagulant Only) 2 = Two Titrant Pumps (Coagulant & Buffer)	0 = No 1 = Yes	0 = No 1 = Yes

Example: LCA5.2201 comes with 2 automatic solenoid micro-pumps (one for coagulant and one for buffer), and also includes pH and temperature measurement capability.

(1) : Syringe pump upgrade is required when chemical supplier states their coagulant should not be diluted, as is the case with some pre-hydrolyzed coagulants.

(2) : pH w/Temp option is required if LCA5 is configured with two titrant pumps. Note: Some applications will require the LCA5 to have two titrant pumps for sample pH adjustment capability in order to ensure accurate results. Contact Chemtrac for details.